

FOR IMMEDIATE RELEASE

May 5, 2018

Media Contact

Raino Isto, Gallery Coordinator

Stamp Gallery, University of Maryland, College Park

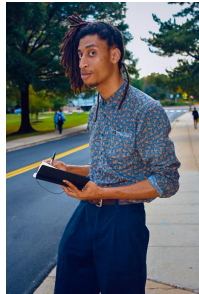
risto@umd.edu | 301-314-8492

THE STAMP GALLERY PRESENTS *CAPITAL LIVES*

**AN EXHIBITION EXPLORING LIFE IN THE NATION'S CAPITAL THROUGH PHOTOGRAPHY,
AT THE UNIVERSITY OF MARYLAND, COLLEGE PARK**

Featuring work by Bo Chen, Sydney Gray, Sarah O'Donoghue, Brea Soul, Christine Stoddard, and Nevada Tyler.

Opening Reception Free and Open to the Public **Wednesday, May 30, 5–7 pm**



Left to right: Sarah O'Donoghue, *Auntie*, 2016; Brea Soul, *Overtime 2*, 2017; Nevada Tyler, *Capital Jim*, 2017; Bo Chen, *We Are All American*, 2017; Christine Stoddard, *Autumnal Death*, 2016; Sydney Gray, *Flower Girl*, 2017.

College Park, MD—The Stamp Gallery presents *Capital Lives*, an exhibition that explores the diversity of lived experiences in Washington, D.C., through photography. The exhibition highlights the work of young photographers documenting the residents and events of the nation's capital during a time of heightened political tension. *Capital Lives* is the Stamp Gallery's annual docent-curated exhibition, curated by gallery staff member Katherine Mullineaux (UMCP '18), currently an undergraduate student at the University of Maryland. The exhibition is on view May 30 through July 4, 2018. An opening reception, free and open to the public, will take place on Wednesday, May 30, 5–7 pm.

The works in the exhibition consider what it means to be a part of the nation's capital in the present moment of global and political change. This show seeks to examine the reality of ordinary life for citizens of the capital of one of the most powerful nations in the world. The artists in *Capital*

The Stamp Gallery

Lives ask: What lies under the image of power? What does it mean to exist in a time when major political shifts trigger movements of both hate and of acceptance? How do artists engage with different identities in such a place and time? The exhibition includes photography and textual works, and features work by Bo Chen, Sydney Gray, Sarah O'Donoghue, Brea Soul, Christine Stoddard, and Nevada Tyler.

An incubator for emerging artists and curators, the Stamp Gallery regularly presents exhibitions curated by undergraduates. Recent student-curated projects include *I'm Fine*, curated by Sarah Schurman (UMCP '18) and Tasiana Paolisso (UMCP '18); and *Paradise Now*, curated by Christopher Bugtong (UMCP '17), Grace DeWitt (UMCP '18), and Shay Tyndall (UMCP '17).

ABOUT THE CURATOR

Katherine Mullineaux is currently pursuing her B.A. in English ('18) at the University of Maryland, College Park, where she works as a docent at the Stamp Gallery. Minor in Art History and Creative Writing, Kat is inspired by the interaction between visual creations and the written word, especially when used to examine the everyday. Born and raised in the DMV area, Kat has always been interested in what makes the city tick and loves to spend time exploring Washington, D.C. She hopes to work in the creative world continuing her employment in galleries and museums in the future.

ABOUT THE STAMP GALLERY

Located on the first floor of the Adele H. Stamp Student Union—Center for Campus Life at the University of Maryland, College Park, the Stamp Gallery is dedicated to exhibiting contemporary art, especially the work of emerging and mid-career artists. The Stamp Gallery supports contemporary art that is challenging, academically engaging, and attuned to broad community and social issues. Through meaningful exhibitions and programming, the Gallery offers outside-of-the-classroom experiential learning opportunities. It functions as a laboratory where emerging artists and curators experiment and work through their ideas. The Gallery's programming aims to emphasize the importance of process to contemporary artistic practice and to provide a forum for dialogue.

FREE and open to the public. Summer Hours: Mondays–Fridays: 11 am–4 pm

Saturdays and Sundays: Closed. More information: thestamp.umd.edu/gallery

###